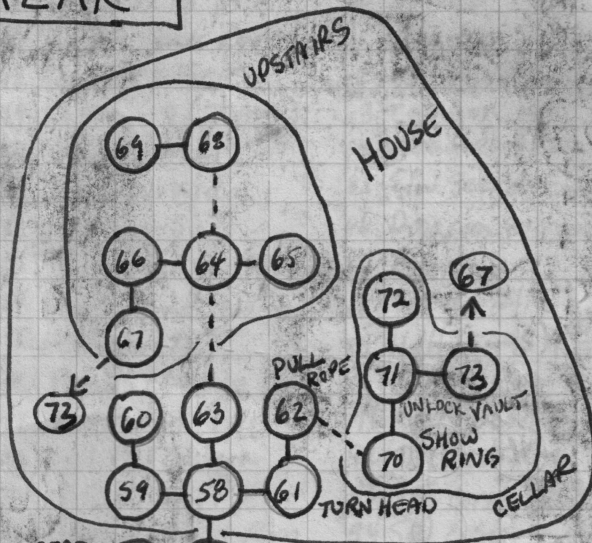
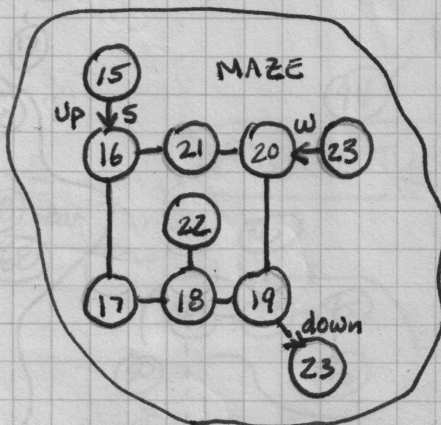
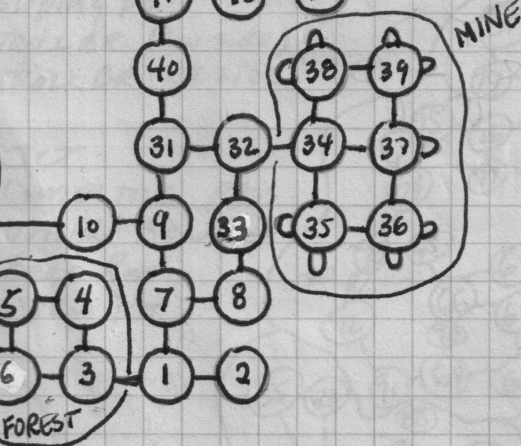


ALMAZAR

- 2 LAMP, KEY
- 4 MATCHES
- 8 OIL
- 15 BOTTLE
- 22 BLACK ROD
- 24 DAGGER *
- 26 SPICES *
- 33 BALL
- 39 DIAMOND *
- 43 STAFF
- 48 HAY
- 49 APPLE *
- 52 RING
- 55 EMERALD *
- 59 CHEESE
- 60 INCENSE
- 63 FIGURINE *
- 65 COMBINATION
- 66 PEARLS *
- 69 MOUSE
- 70 CHAIN *



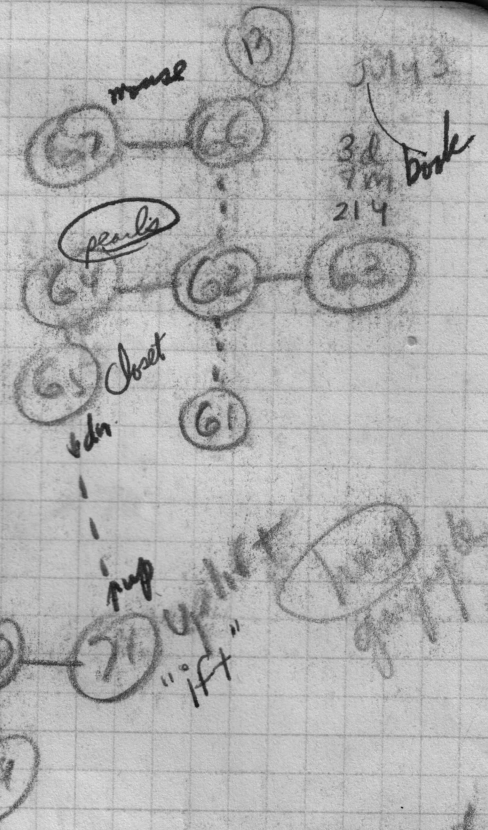
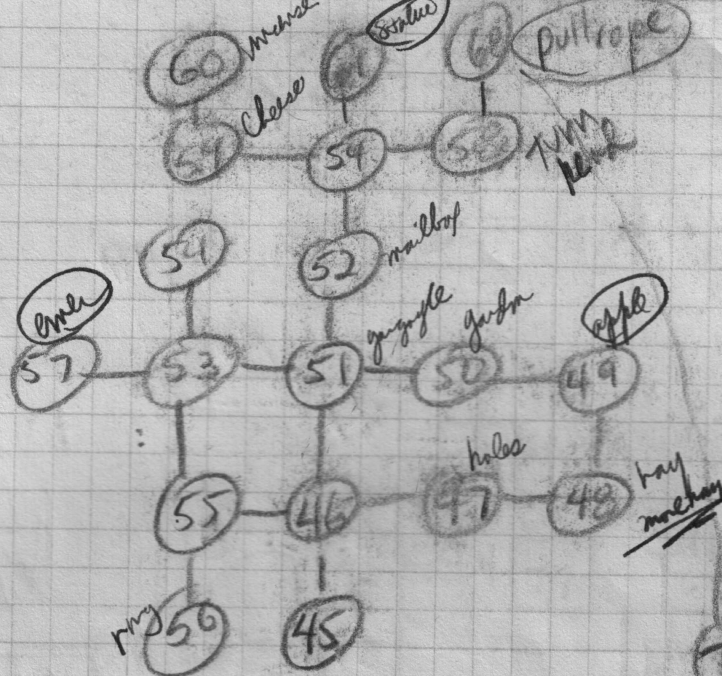
- 45 NORTH BANK
- 46 CROSS ROADS
- 47 "HOLEY" PLACE
- 48 STABLE (HAY)
- 49 ORCHARD (APPLE)
- 50 GARDEN
- 51 ROADS END
- 52 RIVERFRONT (RING)
- 53 GARGOYLE
- 54 OUTSIDE outhouse
- 55 IDOL (EMERALD)
- 56 OUT HOUSE
- 57 HOUSE ENTRANCE
- 58 HALLWAY
- 59 DINING ROOM (CHEESE)
- 60 KITCHEN (INCENSE)
- 61 LIVING Room
- 62 SMALL ROOM (ROPE)
- 63 RECEPTION HALL (FIGURINE)
- 64 ANOTHER FLOOR (OPEN WINDOW)
- 65 LIBRARY (BOOK)
- 66 BEDROOM (PEARLS)
- 67 CLOSET
- 68 TOP FLOOR (MOUSE)
- 69 ATTIC (CHEST)
- 70 CELLAR (CHAIN)
- 71 VAULT ROOM
- 72 VAULT
- 73 SMALL ROOM
- 74 FINISH



- 1 OUTSIDE SHACK
- 2 SHACK (LAMP, KEY)
- 3 PATH
- 4 FOREST (MATCHES)
- 5 FOREST
- 6 FOREST
- 7 MIDDLE OF ROAD
- 8 POOL (OIL)
- 9 3-WAY JUNCTION
- 10 OUTSIDE CAVE

- 11 Room
- 12 NARROW PART
- 13 3 PATHS
- 14 LONG HALL
- 15 TALL WALL (BOTTLE)
- 16-21 MAZE
- 22 DEAD END (ROD)
- 23 E/W PASS
- 24 GNOME SIGN ROOM (DAGGER)
- 25 DISAPP. KNIFE ROOM
- 26 NORTH LEDGE (SPICES)
- 27 SOUTH LEDGE
- 28 LONG HALL
- 29 SKELETAL REMAINS
- 30 BROKEN ROCKS
- 31 "T" IN ROAD
- 32 OUTSIDE MINE
- 33 OAK TREE (BALL)
- 34-38 MINE MAZE
- 39 MINE MAZE (DIAMOND)

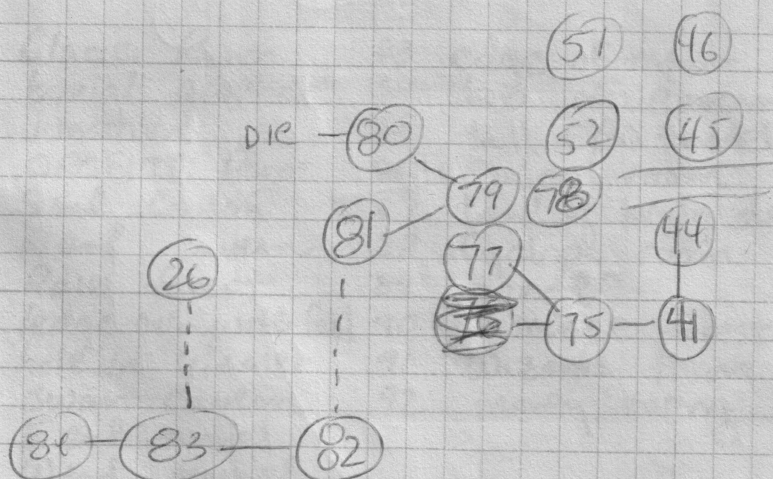
- 40 COLD WIND PLACE
- 41 GRAVEL PATH
- 42 HILL
- 43 ROCK PLACE (STAFF)
- 44 RIVERBANK



diamond 7
 spices 7
 dagger 7
 emerald 7
 apple 7 (56)
 pearls 7
 statue 7
 platinum chain 7

(69) basement
 wizard
 platinum chain
 using
 (70) vault
 (71) 'ift' Room

Almazan addition



(75) HIL
 (77) RIVERBANK
 (78) RIVER
 (79) FORK IN RIVER
 (80) Falls
 (81) Swept into Subterranean Cavern

(82) underground Chasm
 (83) Sub-terranean lake
 (84) island